



1 Bed Maisonette
located in



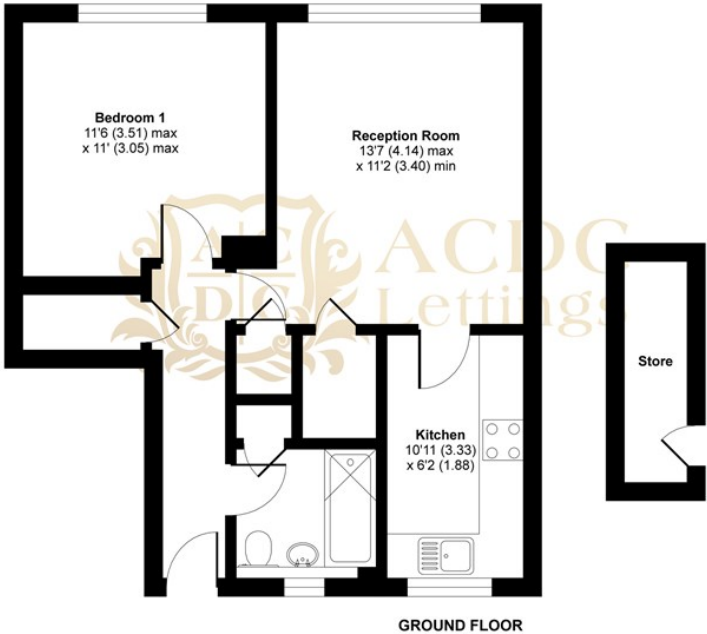
111 Tulip Avenue
Nottingham
NG3 4PH

Tulip Avenue, Nottingham, NG3

Approximate Area = 505 sq ft / 46.9 sq m
Outbuilding = 28 sq ft / 2.6 sq m
Total = 533 sq ft / 49.5 sq m
For identification only - Not to scale



Denotes restricted
head height



Floor plan produced in accordance with RICS Property Measurement Standards incorporating International Property Measurement Standards (IPMS2 Residential). © nichcom 2021. Produced for ACDG Lettings. REF: 757955

£775 PCM

CONTACT

5A
Church Street
Leamington Spa
Warwickshire
CV31 1ER

EMAIL

sales@acdc.agency

TELEPHONE

0333 335 5445

<http://www.acdcsalesandlettings.co.uk>

SUMMARY

Nestled on the charming Tulip Avenue in Nottingham, this delightful one-bedroom maisonette offers a perfect blend of comfort and convenience. Ideal for a single occupant or a couple, this furnished property presents an inviting living space that is both practical and stylish.

Upon entering, you will find a well-appointed reception room that serves as a welcoming area for relaxation or entertaining guests. The layout is thoughtfully designed to maximise space, ensuring that you feel at home from the moment you step inside. The bedroom is a tranquil retreat, providing a peaceful atmosphere for rest and rejuvenation.

The maisonette also features a modern bathroom, equipped with essential amenities to cater to your daily needs. The property is furnished, allowing you to move in with ease and start enjoying your new home right away.

Situated in a prime location, this maisonette is close to local amenities, making it an excellent choice for those who appreciate accessibility to shops, cafes, and public transport. Whether you are looking for a cosy home or a smart investment opportunity, this property on Tulip Avenue is sure to impress. Don't miss the chance to make this charming maisonette your own.

